

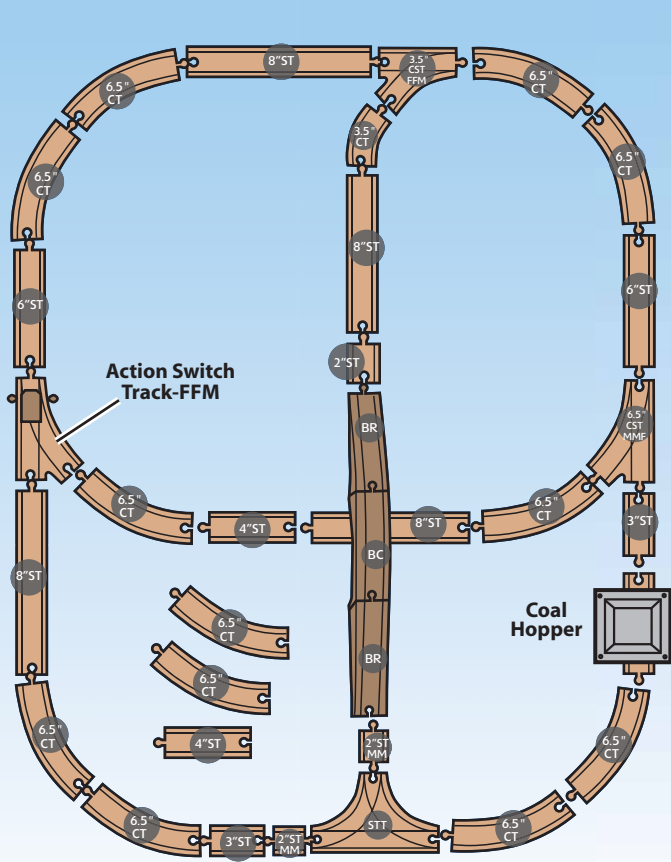
EXPANDED COAL HOPPER FIGURE 8 SET



Which Includes:

- 1 x Bridge Crossing
- 2 x Bridge Riser
- 1 x Coal Hopper
- 1 x 3.5" Curved Track
- 10 x 6.5" Curved Track
- 1 x 3.5" Curved Switch Track-FFM
- 1 x 6.5" Curved Switch Track-MMF
- 2 x 2" Track Adaptor-MM
- 1 x 2" Straight Track
- 2 x 3" Straight Track
- 1 x 4" Straight Track
- 2 x 6" Straight Track
- 1 x 6.5" Action Switch Track-FFM
- 1 x Switch T-Track-FFF

PIECES LEFT OVER:
2 x 6.5" Curved Track
1 x 4" Straight Track



Legend:

M=Male
F=Female
ST=Straight Track
CT=Curved Track
CST=Curved Switch Track
BR=Bridge Riser
BC=Bridge Crossing
STT=Switch T-track

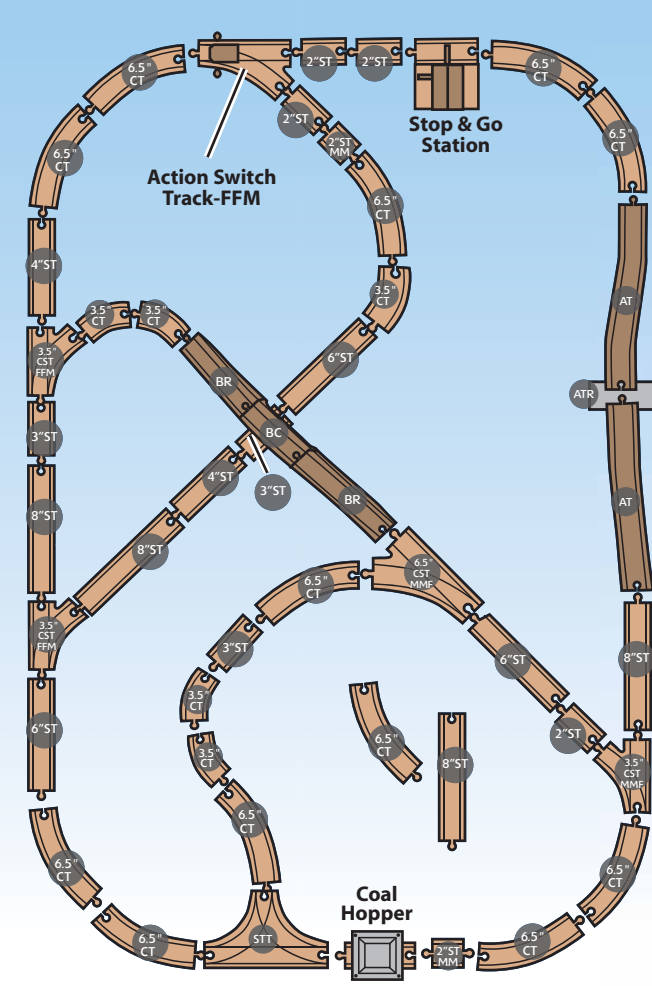
DELUXE EXPANDED COAL HOPPER FIGURE 8 SET



Which Includes:

- 1 x Stop & Go Station
- 2 x Bridge Riser
- 1 x Bridge Crossing
- 1 x Coal Hopper
- 4 x 2" Straight Track
- 3 x 3" Straight Track
- 2 x 4" Straight Track
- 3 x 6" Straight Track
- 3 x 8" Straight Track
- 5 x 3.5" Curved Track
- 11 x 6.5" Curved Track
- 1 x 3.5" Curved Switch Track-MMF
- 2 x 3.5" Curved Switch Track-FFM
- 1 x 6.5" Action Switch Track-MMF
- 1 x 6.5" Action Switch Track-FFM
- 1 x Switch T-Track-FFF
- 2 x 2" Track Adaptor-MM
- 2 x Ascending Track
- 1 x Ascending Track Riser

PIECES LEFT OVER:
1 x 6.5" Curved Track
1 x 8" Straight Track



Legend:

M=Male
F=Female
ST=Straight Track
CT=Curved Track
CST=Curved Switch Track
ATR=Ascending Track Riser
BR=Bridge Riser
BC=Bridge Crossing
AT=Ascending Track

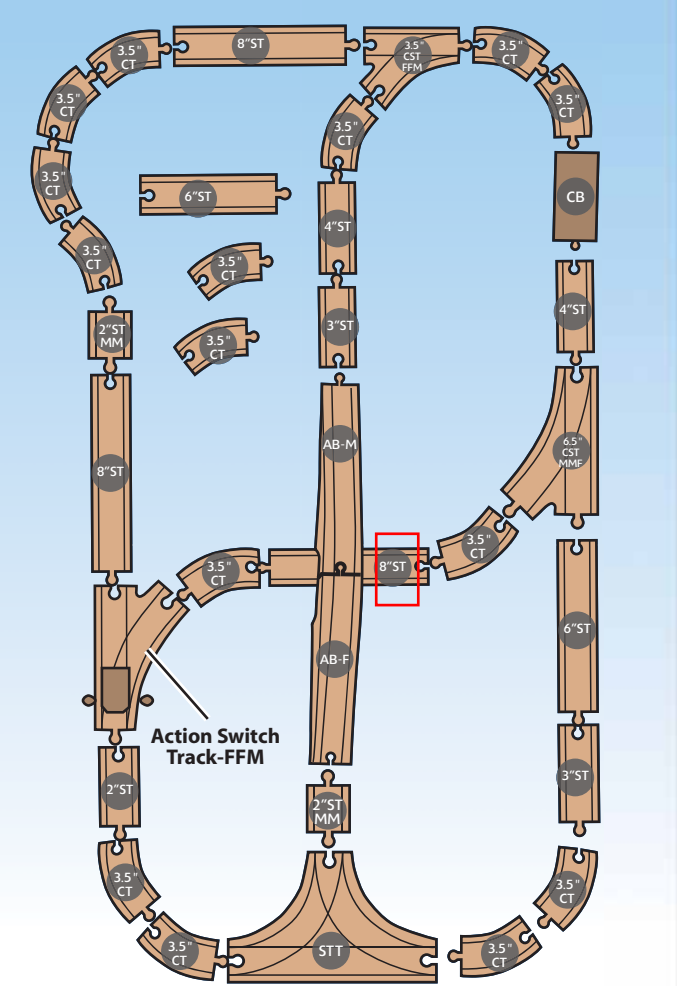
EXPANDED 5-IN-1 UP AND AROUND SET



Which Includes:

- 1 x Covered Bridge
- 1 x Ascending Bridge-M
- 1 x Ascending Bridge-F
- 1 x 6.5" Action Switch Track-FFM
- 1 x 3.5" Curved Switch Track-FFM
- 1 x 6.5" Curved Switch Track-MMF
- 13 x 3.5" Curved Track
- 2 x 2" Straight Track-MM
- 1 x 2" Straight Track
- 2 x 3" Straight Track
- 2 x 4" Straight Track
- 1 x 6" Straight Track
- 3 x 8" Straight Track
- 1 x Switch T-track-FFF

PIECES LEFT OVER:
2 x 3.5" Curved Track
1 x 6" Straight Track



Legend:

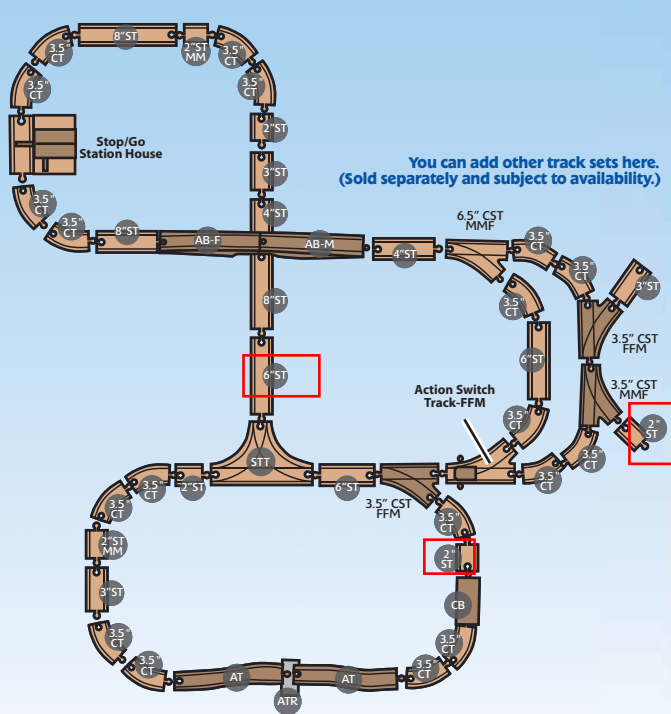
M=Male
F=Female
ST=Straight Track
CT=Curved Track
STT=Switch T-track
AB=Ascending Bridge
CB=Covered Bridge

DELUXE EXPANDED 5-IN-1 UP AND AROUND SET



Which Includes:

- 1 x Ascending Bridge-F
- 1 x Ascending Bridge-M
- 1 x 6.5" Action Switch Track-FFM
- 2 x Ascending Track
- 1 x Ascending Track Riser
- 1 x Covered Bridge
- 2 x 3.5" Curved Switch Track-FFM
- 1 x 3.5" Curved Switch Track-MMF
- 1 x 6.5" Curved Switch Track-MMF
- 19 x 3.5" Curved Track
- 1 x Stop/Go Station House
- 4 x 2" Straight Track
- 2 x 2" Straight Track-MM
- 3 x 3" Straight Track
- 2 x 4" Straight Track
- 3 x 6" Straight Track
- 3 x 8" Straight Track
- 1 x Switch T-track-FFF



Legend:

M=Male
F=Female
ST=Straight Track
AT=Ascending Track
CT=Curved Track
AB=Ascending Bridge
CB=Covered Bridge
STT=Switch T-track

Expand the fun!

Y4088 Figure 8 Set Expansion Pack



Y4089 Straight & Curved Expansion Pack



Y4413 Deluxe Figure 8 Expansion Track Pack



Y4415 Quarry Mine Tunnel



Thomas the Tank Engine & Friends™
CREATED BY BRIAN ALLCROFT

Based on the Railway Series by The Reverend W Awdry.
©2012 Gullane (Thomas) Limited. Thomas the Tank Engine & Friends and Thomas & Friends are trademarks of Gullane (Thomas) Limited.
©2012 Mattel. All Rights Reserved. "and" designate U.S. trademarks of Mattel, except as noted. PRINTED IN CHINA. IMPRIMERIE EN CHINE. Mattel East Asia Ltd., Room 1105, South Tower, World Finance Centre, Harbour City, Tsimshatsui, HK, China.

For fun facts, games and more, visit:
www.thomasandfriends.com

ID: Y4088-0920G1

CONSUMER ASSISTANCE
1-800-433-5437 (US & Canada)
1-800-335-3132 (Australia)
service.fisher-price.com

Y4088

Fisher-Price®

THOMAS & FRIENDS™ WOODEN RAILWAY

FIGURE 8 SET EXPANSION PACK

Builder's Guide

LANGUAGE : US English

ASST. NO. (-DASH): NA(-9993)
PART CODE: Y4088-0920G1
SOFTWARE: Illustrator CS5
COLOR PROFILE/LPI: GRACoL_EPPC_High Speed / 150 lpi
CS DATE:

GRAPHIC DESIGNER: Kary Li
PI ENGINEER: Rianne Wong
PROJECT ENGINEER: Ryan Ruan
CS VENDOR: lasik

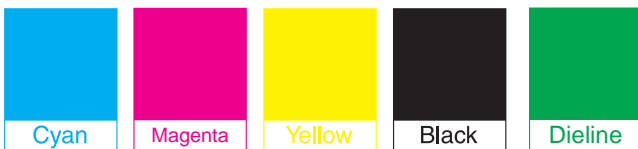
NOTES TO PRINTER:

- 1) Proofs accurate for process color only. All spot colors must follow PMS Color Formula Guide or color swatch specified.
- 2) For any dieline or structure change, signed sample approval by MAPS engineer is required before mass printing.

PROOF APPROVAL

SIGN OFF (GRAPHIC):

DATE:



9/28/2012 remark for G1
updated Water Tower to Coal Hopper

COPY APPROVED

